

This is quite a challenging walk which combines the Ettrick Marshes, high conifer forest and pretty Gamescleuch Linn. It can be wet in places, so strong footwear is recommended.

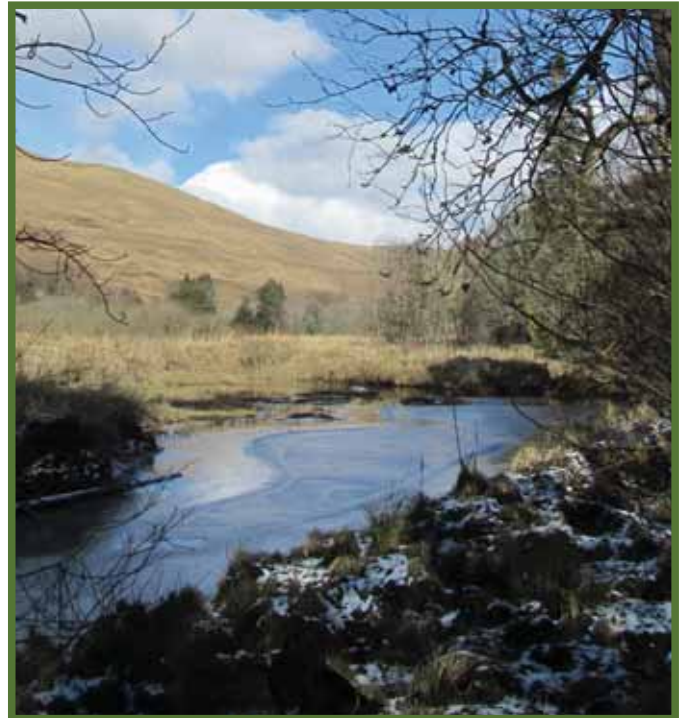
**Start & Finish:** Park at Honey Cottage parking area, Grid Reference NT297164

1. Cross the bridge then immediately turn right following the path close to the bank of the Ettrick Water. Continue to follow the path for about  $\frac{1}{2}$  mile. At this point, the boardwalk heads off to the right and you have a choice of routes. You can follow the Hut Circle boardwalk or continue along the main path. Shortly after the Hut Circle boardwalk rejoins the main path you will see a sign to the left for the 'High Conifer Route'.

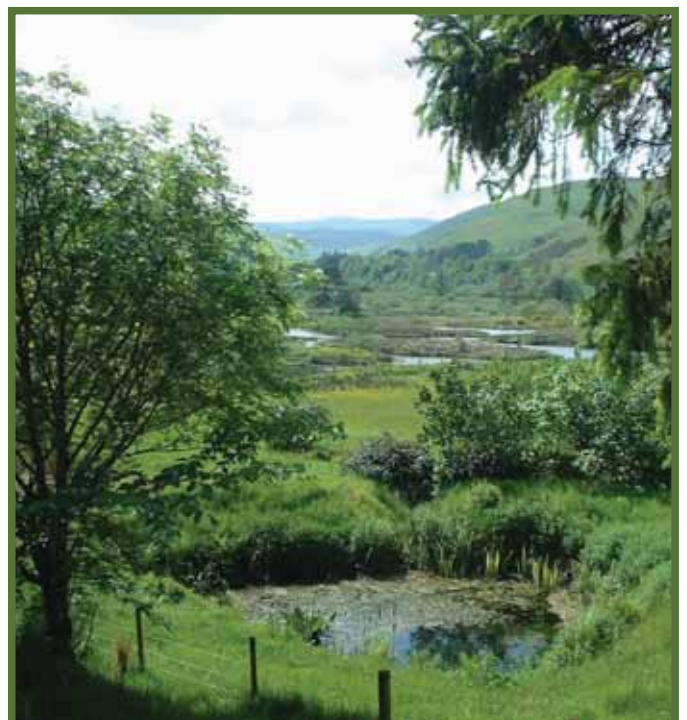
2. Turn left and follow the path up through the forest. The track descends, but then climbs again. After following the track for  $\frac{3}{4}$  mile, there is a forest road end, above you on the right. Continue on the path/track turning to the right and after about  $\frac{1}{4}$  mile there is a point where you can drop slightly down to join the forest road.

3. Walk along the forest road for about  $1\frac{1}{2}$  mls. You will see a wooden signpost on your right to Gamescleuch Linn and Ettrick Marshes. Turn right here and follow the path as it descends following the Gamescleuch Burn.

4. After about  $\frac{3}{4}$  mile you reach a junction of paths. If you want to catch a glimpse of the remains of Gamescleuch Tower, you can take a short detour over the bridge. Otherwise continue straight on, turning to the right as the path follows a fence. The path turns right again heading back for about  $1\frac{3}{4}$  mls, passing two bird hides, to the start.



Ettrick Marshes



Gamescleuch Lochs